

Suite No. 2 in F Major

Score in BC

by Danielle Fisher (ASCAP)

$\text{♩} = 100$

BC 1
BC 2
BC 3
BC 4

7 8 9 10 11 12 13 14

15 16 17 18 19 20 21 22

f *f* *f* *f* *f* *f*

p *p* *p* *p* *f* *f* *f* *f*

Score in BC

2

23

BC 1
BC 2
BC 3
BC 4

23 24 25 26 27 28 29 30

Detailed description: This system contains measures 23 through 30. It features four staves labeled BC 1, BC 2, BC 3, and BC 4. The music is in bass clef with a key signature of one flat. BC 1 has a melodic line with various ornaments and slurs. BC 2 and BC 3 provide harmonic support with chords and moving lines. BC 4 has a more active bass line. Measure numbers 23-30 are printed below the staves.

35

BC 1
BC 2
BC 3
BC 4

31 dim. 32 33 34 p 35 36 37 38

dim. *p* *mf*

Detailed description: This system contains measures 31 through 38. It features four staves labeled BC 1, BC 2, BC 3, and BC 4. BC 1 starts with a long slur over measures 31-33, followed by a dynamic marking of *p* at measure 34. BC 2 and BC 3 also have *dim.* markings at the start. BC 3 has an *mf* marking at measure 34. The music continues with various dynamics and slurs. Measure numbers 31-38 are printed below the staves.

BC 1
BC 2
BC 3
BC 4

39 40 41 42 43 44 45 46

Detailed description: This system contains measures 39 through 46. It features four staves labeled BC 1, BC 2, BC 3, and BC 4. BC 1 and BC 2 have relatively simple rhythmic patterns. BC 3 has a long slur over measures 39-41 and another slur over measures 42-44. BC 4 has a steady bass line. Measure numbers 39-46 are printed below the staves.

51

BC 1

BC 2

BC 3

BC 4

47 48 49 50 51 52 53 54

mf *p*

Detailed description: This system of music covers measures 47 to 54. It features four parts: BC 1, BC 2, BC 3, and BC 4. Measure 51 is highlighted with a box. The music is in bass clef with a key signature of one flat. BC 1 and BC 2 have similar rhythmic patterns of eighth and quarter notes. BC 3 has a melodic line with a long slur over measures 49-50. BC 4 provides a steady accompaniment. Dynamics are marked as *mf* (mezzo-forte) at measure 49 and *p* (piano) at measure 51.

BC 1

BC 2

BC 3

BC 4

55 56 57 58 59 60 61 62

Detailed description: This system of music covers measures 55 to 62. It features four parts: BC 1, BC 2, BC 3, and BC 4. The music continues in bass clef with a key signature of one flat. BC 1 and BC 2 have similar rhythmic patterns. BC 3 has a melodic line with a long slur over measures 57-58. BC 4 provides a steady accompaniment.

67

BC 1

BC 2

BC 3

BC 4

63 64 65 66 67 68 69 70

f

Detailed description: This system of music covers measures 63 to 70. It features four parts: BC 1, BC 2, BC 3, and BC 4. Measure 67 is highlighted with a box. The music is in bass clef with a key signature of one flat. BC 1 and BC 2 have similar rhythmic patterns. BC 3 has a melodic line with a long slur over measures 65-66. BC 4 provides a steady accompaniment. Dynamics are marked as *f* (forte) at measure 67.

Score in BC

BC 1

BC 2

BC 3

BC 4

71 72 73 74 75 76 77 78

Detailed description: This system of music covers measures 71 through 78. It features four staves labeled BC 1, BC 2, BC 3, and BC 4. The key signature has one flat (B-flat). BC 1 has a complex melodic line with many beamed eighth notes and a long slur spanning from measure 71 to 78. BC 2 has a simpler line with quarter and eighth notes. BC 3 has a line with a long slur from measure 73 to 78. BC 4 has a line of quarter notes. Measure numbers 71, 72, 73, 74, 75, 76, 77, and 78 are printed below the staves.

83

BC 1

BC 2

BC 3

BC 4

79 80 81 82 83 84 85 86

Detailed description: This system of music covers measures 79 through 86. It features four staves labeled BC 1, BC 2, BC 3, and BC 4. The key signature has one flat (B-flat). A box containing the number '83' is positioned above the BC 1 staff. BC 1 has a melodic line with a long slur from measure 79 to 86. BC 2 has a line of quarter notes. BC 3 has a line with a long slur from measure 81 to 86. BC 4 has a line of quarter notes. Measure numbers 79, 80, 81, 82, 83, 84, 85, and 86 are printed below the staves.

BC 1

BC 2

BC 3

BC 4

87 88 89 90 91 92

Detailed description: This system of music covers measures 87 through 92. It features four staves labeled BC 1, BC 2, BC 3, and BC 4. The key signature has one flat (B-flat). BC 1 has a melodic line with a long slur from measure 87 to 92. BC 2 has a line with a long slur from measure 89 to 92. BC 3 has a line with a long slur from measure 89 to 92. BC 4 has a line of quarter notes. Measure numbers 87, 88, 89, 90, 91, and 92 are printed below the staves.

The image shows a musical score for four bassoon parts, labeled BC 1, BC 2, BC 3, and BC 4. The score is written in bass clef with a key signature of one flat (B-flat). The measures are numbered 93 through 98. BC 1 has a dynamic marking of *p* and a slur over measures 93 and 94. BC 2 and BC 3 have rests in measures 95 and 96. BC 4 has a rest in measure 95. The score ends with a double bar line at measure 98.

| Measure | BC 1 | BC 2 | BC 3 | BC 4 |
|---------|-----------------------------------|--------------------------|--------------------------|--------------------------|
| 93 | <i>p</i> (half note), (half note) | (half note), (half note) | (half note), (half note) | (half note), (half note) |
| 94 | (half note), (half note) | (half note), (half note) | (half note), (half note) | (half note), (half note) |
| 95 | (half note), (half note) | Rest, Rest | Rest, Rest | Rest, Rest |
| 96 | (half note), (half note) | (half note), (half note) | (half note), (half note) | (half note), (half note) |
| 97 | (half note), (half note) | (half note), (half note) | (half note), (half note) | (half note), (half note) |
| 98 | (half note), (half note) | Rest, Rest | Rest, Rest | Rest, Rest |

BC 1

Suite No. 2 in F Major

by Danielle Fisher (ASCAP)

$\text{♩} = 100$

f

7

15 *p*

19 23 *f*

25

35 *p* *dim.*

38

44

BC 1

51

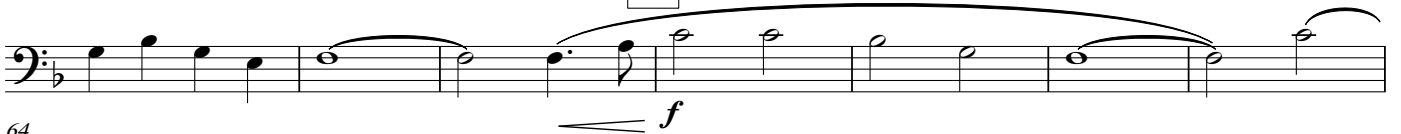


50

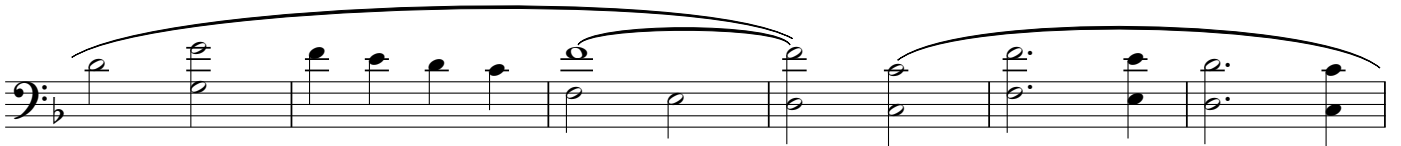


57

67



64



71



77

83



91



Suite No. 2 in F Major

by Danielle Fisher (ASCAP)

$\text{♩} = 100$ **2**

f

7

15

p

19 **23**

f

25

35

31 *dim.* *p*

37

43

BC 2

51



50



57

67



63



71

83



78



85



92

BC 3

Suite No. 2 in F Major

by Danielle Fisher (ASCAP)

$\text{♩} = 100$ **2**

f

7

15

p

19 **23**

f

25

35

31 *dim.* *mf*

43

BC 3

51



50



57

67



63

$\text{<} f$



71

83



78



85



92

BC 4

Suite No. 2 in F Major

by Danielle Fisher (ASCAP)

$\text{♩} = 100$

f

7

7

15

15

p

19

19

f

23

25

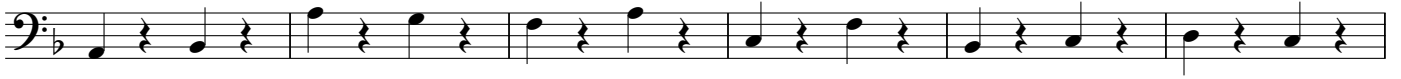
30

dim.

p

BC 4

35



41

51



47



53



59

67



65



71

83



78



85



92